

Office to let

Stefan cel Mare Building

Bucharest, Sector 2, 60A Tunari Street

Building information

Building status	Existing
Year of construction	2016
Parking ratio	1 / 47 sq m
Total building area	7 545 sq m

Commercial terms

Office space*	after login *
Parking	after login *
Service charge*	after login *
Minimum lease term	after login *
Availability	after login *

* Asking terms for m²/month

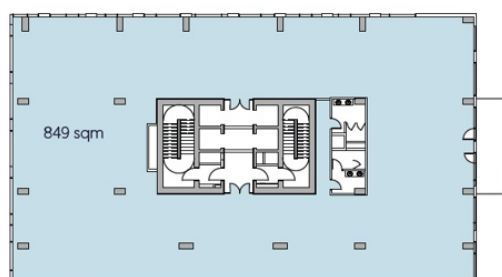
Location



Available space

Building completely leased

Typical floor plan



Public transport

Metro: M1

Bus: 133, 182, 226, 335, 368

Tram: 1

Contact



+40 21 302 3400

More information